

SOME FATTY ACID ESTERS OF THE RIPE FRUITS OF *NAUCLEA LATIFOLIA* (FAMILY RUBIACEAE)

AL. Fadipe

Department of Chemistry, Federal University of Technology,
Minna, Niger State, Nigeria.

ABSTRACT

Purification of the chloroform extract of the ripe fruits of *N. latifolia* (family: Rubiaceae) using a series of flash chromatography and preparative thin layer chromatography led to the isolation of three fatty acid esters. Characterization and structural elucidation of the esters was based on the use of physical parameters (solubility, melting points), spectroscopic data (UV, IR, ¹H-NMR, ¹³C-NMR, GC-MS) and literature data. The fatty acid esters were identified as ethyl hexadecanoate; methyl, 14-methylpentadecanoate and methyl trans-9-octadecenoate. This is the first report of such esters from the ripe fruits of *N. latifolia*.

Keywords: *N. latifolia*, Ripe Fruits, Chloroform Extract, Spectroscopy, Fatty Acid Esters.

INTRODUCTION

Natural products derived from plants have remained central to traditional medicine and has helped served as sources of new drugs with good therapeutic effect and low toxicity. Unfortunately, "the sleeping giant of pharmaceutical industry"¹ still has several of thousands of plant species yet to be investigated for their phytoconstituents and invariably, their biological potentials. Therefore, the need for continuous search into the phytochemicals of such plants cannot be undermined. *Nauclea latifolia* is a shrub or small tree native to tropical Africa. The leaves are glabrous, opposite, rounded-ovate, glossy green with tufts of hairs. The fruits are usually fleshy, shallow-pitched, with numerous embedded seeds surrounded by a pink edible, sweet- sour pulp. The seeds are usually small, ovoid, numerous and brownish with a pleasant taste but could be emetic if taken in excess.² Traditionally, the plant has been reported as an antimalarial,^{3, 4} antibacterial^{3, 5, 6, 7, 8} and antiviral.^{9, 10, 11} Other potentials of the fruits include, as a laxative¹² and hypocholesterolemic.¹³ Phytochemicals such as alkaloids,^{14, 15} saponins,^{5, 9} tannins, oxalates, phytates^{13, 15} and phthalates^{7, 8, 16} have been detected and isolated from various

parts of the plant. In view of the continuous search for more phytochemicals from the fruits of *N. latifolia*, this paper, therefore, presents the isolation and characterization of some fatty acid esters from the chloroform extract of the ripe fruits of *N. latifolia*.

MATERIALS AND METHODS

Collection of Plant Material

The ripe fruits of *N. latifolia* were collected from a farmland in Maikunkele area of Bosso Local Government area, Minna, Niger State, Nigeria, in the month of September, 2013 and authenticated by Mallam Gallah, of the Herbarium section of the Department of Biological Sciences, Ahmadu Bello University, Zaria, Nigeria.

Extraction Procedures

Air-dried and pulverized ripe fruits of *N. latifolia* (500g) were extracted with chloroform by continuous extraction until the extractant became colorless. The resulting solution was filtered, concentrated in vacuo and further dried over a water bath to afford a dark brown gummy mass, labeled chloroform extract, C.

Fractionation of Crude Chloroform Extract, C

Three grams of C, was subjected to fractionation by flash column chromatography using silica gel (mesh 60-120, 90g) and hexane as the adsorbent and packing solvent respectively by the slurry method. Elution was carried out with varying proportions of hexane: ethyl acetate and eluents were monitored by TLC, so that identical fractions were pooled. Fractions from solvent system hexane: ethyl acetate (19: 1) and hexane: ethyl acetate (9: 1) yielded promising spots and were labeled fractions C1 and C2 respectively. Both fractions were further purified.

Purification of Fraction C1

TLC of fraction C1 using petroleum ether: chloroform (2:1) as the mobile phase revealed two major and two minor spots which were resolved by further purification. 460mg of C1 was subjected to flash chromatography (silica gel, mesh 230-400, 30g) and elution carried out with varying proportions of petroleum ether and chloroform. Elution with solvent mixture petroleum ether: chloroform (1:1) yielded two major distinct spots on TLC that were resolved using preparative TLC (petroleum ether: ethyl acetate, 9: 1) to yield two different compounds labeled C1-A and C1-B.

Purification of Fraction C2

TLC of fraction C2 using petroleum ether: ethyl acetate (9:1) as the mobile phase revealed one major and three minor spots. 250mg of fraction C2 was subjected to flash chromatography (silica gel, mesh 230-400nm, 30g) and varying proportions of chloroform: ethyl acetate as the mobile phase. Elution with solvent mixture chloroform: ethyl acetate (19:1) yielded one major spot with slight impurities. The obtained sub-fraction was concentrated in vacuo, air-dried and washed severally with methanol in order to remove the impurities. TLC of the sub-fraction revealed a single spot, coded C2-A.

Characterization of Isolates

IR and UV were recorded both in CHCl_3 using FTIR (Spectrolab MB3000) and UV spectra (T60 UV-Visible spectrophotometer) respectively, while, GC-MS was recorded using GCMS-QP 2010 plus Shimadzu. $^1\text{H-NMR}$, $^{13}\text{C-NMR}$ (proton-decoupled) and DEPT-135 spectra were taken in CDCl_3 on JEOL LA spectrometer operating at 500MHz. Melting points were uncorrected.

RESULTS AND DISCUSSION

Physical and Spectral Characterization of Isolates.

Compound C1-A: Ethyl hexadecanoate

White waxy-like (29mg); melting point, 25.7-27°C; soluble in chloroform and diethyl ether, slightly soluble in hexane, acetone and ethanol, insoluble in water; TLC, single spotted, R_f 0.50 (no color in sunlight, UV active, golden brown in iodine, blue with vanillin-sulphuric acid + heat and deep brown with 5% alc. KMnO_4). GC-MS revealed its molecular formula and weight as $\text{C}_{18}\text{H}_{36}\text{O}_2$ and 284g mol^{-1} respectively. IR (ν max, cm^{-1}): 2900-2850 (C-H, aliphatic), 1702.95 (CO) 1487.95 (C-H in CH_3), 1300-1200 (CO, acetate) and 1014.82 (C-H in CH_2). UV (λ max, nm): 274 (CO). $^1\text{H-NMR}$ (δ ppm): 1.26-1.27 (weak triplet, H-1'), 4.04-4.07 (weak quartet, H-2'), 2.18-2.11 (weak quartet, H-2), 1.61-1.63 (weak multiplet, H-3) 1.27 (sharp singlet, H-4 to H-14), 1.30-1.33 (weak multiplet, H-15) and 0.95-1.96 (weak triplet, H-16). $^{13}\text{C-NMR}$ (δ ppm): 13.8 (C-1' and C-16), 60.5 (C-2'), 171.6 (C-1), 32.7 (C-2), 24.8 (C-3), 28.2 (C-4), 28.5 (C-5 and C-13), 28.7 (C-6 to C-12), 31.2 (C-14) and 22.3 (C-15). DEPT-135 (δ ppm): one quaternary (C-1), fifteen methylene (C-2', C-2 to C-15), two methyl (C-1' and C-16) and no methine groups. GC-MS (m/z peaks): $284[\text{M}^+, \text{C}_{18}\text{H}_{36}\text{O}_2]^+$, $239[\text{M}-\text{OC}_2\text{H}_5]^+$, $157[\text{C}_9\text{H}_{17}\text{O}_2]^+$, $101[\text{C}_5\text{H}_9\text{O}_2]^+$, 88 [base peak, $\text{C}_4\text{H}_8\text{O}_2]^+$, $73[\text{C}_3\text{H}_5\text{O}_2]^+$, $57[\text{C}_4\text{H}_9]^+$, $43[\text{C}_3\text{H}_6]^+$, $41[\text{C}_3\text{H}_5]^+$, $29[\text{C}_2\text{H}_5]^+$, $27[\text{C}_2\text{H}_3]^+$. The IR and UV spectra showed characteristic bands indicating the presence of a carboxyl group of an ester. The proton NMR also revealed a single sharp peak at δ 1.27, an indication that several methylene groups were joined together in the same environment, while all other peaks were weak. Carbon-13 revealed that of the ten proton-decoupled peaks, peak at δ 28.7 was the sharpest because of several methylene groups in same environment, while all others were of low intensity, an indication that only one or two carbon atoms were in same environment, while, dept 135 showed that the compound was made up of eighteen carbon atoms. GC-MS spectra gave a prominent peak at m/z 239 indicating the loss of OR group from the molecular ion, M^+ . This is typical of an ethyl ester. Characteristic peaks at m/z 88 and 73 are due to Mc-Lafferty rearrangement, while peaks at 239, 157 and 101 and 57, 43, 41, 29 and 27 are due to oxygen- and alkyl-containing fragments respectively.¹⁷ Correlation of obtained data of compound C1-A with literature revealed similar data with ethyl hexadecanoate (Figure 1) a

common fatty acid ester that has been reported and isolated in several medicinal plants.^{18, 19, 20}

Compound C1-B: Methyl, 14-methylpentadecanoate

A golden yellow oil (18.2mg); melting point, 30-34°C; soluble in chloroform, dichloromethane and diethyl ether, slightly soluble in hexane, acetone, ethyl acetate and ethanol, insoluble in water; TLC, single spotted, R_f 0.47 (no color in sunlight; UV active, golden brown in iodine, blue with vanillin-sulphuric acid + heat and deep brown with 5% alc. $KMnO_4$). GC-MS revealed its molecular formula and weight as $C_{17}H_{34}O_2$ and 270g mol^{-1} respectively. **IR** (ν max, cm^{-1} , CHCl_3): 2905-2800 (C-H, aliphatic), 1701.90 (CO), 1487.95 (C-H in CH_3), 1300-1208 (CO, acetate) and 1012.72 (C-H in CH_2). **UV** (λ max, nm): 274 (CO). **$^1\text{H-NMR}$** (δ ppm, CDCl_3): 3.52-3.54 (sharp singlet, H-1'), 2.08-2.12 (weak triplet, H-2), 1.48-1.51 (weak quintet, H-3), 1.71-1.74 (weak multiplet, H-14), 1.26 (sharp singlet, H-4 to H-13) and 0.99-1.00 (doublet of a doublet, H-14 and H-2'). **$^{13}\text{C-NMR}$** (δ ppm): 48.5 (C-1'), 171.9 (C-1), 31.5 (C-2), 25.0 (C-3), 28.7 (C-4), 29.0 (C-5), 29.2 (sharp, C-6 to C-10), 29.8 (C-11), 26.3 (C-12), 36.6 (C-13), 27.6 (C-14), and 22.7 (C-15 and C-2'). **DEPT 135** (δ ppm): revealed one quaternary (C-1), twelve methylene (C-2 to C-13), three methyl (C-1', C-2' and C-15) and one methine (C-14) groups. **GC-MS** (m/z peaks): $270[\text{M}^+, \text{C}_{17}\text{H}_{34}\text{O}_2]^+$, $239[\text{M}-\text{OCH}_3]^+$, $227[\text{M}-\text{OC}_2\text{H}_5]^+$, $101[\text{C}_5\text{H}_9\text{O}_2]^+$, $87[\text{C}_4\text{H}_7\text{O}_2]^+$, $74[\text{base peak}, \text{C}_3\text{H}_6\text{O}_2]^+$, $57[\text{C}_4\text{H}_9]^+$, $43[\text{C}_3\text{H}_6]^+$, $41[\text{C}_3\text{H}_5]^+$, $29[\text{C}_2\text{H}_5]^+$, $27[\text{C}_2\text{H}_3]^+$. The IR and UV spectra showed characteristic bands indicating the presence of a carboxyl group of an ester. The proton NMR also revealed absence of a peak at carbon-1, an indication that it is a carboxyl group, with no H-atom, while the singlet peak at $\delta 3.52$ is indicative of a methyl group attached to an electron-withdrawing oxygen atom. The weak multiplet peaks at $\delta 1.71$ indicates the proton at H-14 is a methine. A single sharp peak at $\delta 1.27$ is an indication that several methylene groups were joined together in the same environment, while the doublet of a doublet at C-15 and C-2' indicates the protons on both carbons are neighbors to a single proton at C-14 (n+1 rule) and therefore in same environment. Carbon-13 NMR revealed twelve proton-decoupled peaks, while dept 135 showed that the compound was made up of seventeen carbon atoms. GC-MS spectra gave prominent peaks at m/z 239, 227 indicating the loss of OR groups from the molecular ion, M^+ . This is typical of a fatty acid ester. Characteristic

peaks at m/z 87 and 74 are due to Mc-Lafferty rearrangement, while peaks at 101 and 57, 43, 41, 29 and 27 are due to oxygen- and alkyl-containing fragments respectively.¹⁷ Correlation of obtained data with literature values revealed that compound C1-B had similar data with methyl, 14-methylpentadecanoate (Figure 2) a fatty acid ester that has been reported and isolated in several medicinal plants.^{21, 22, 23}

Compound C2-A: Methyl trans-9-octadecenoate

Cream-colored oil (15.7mg); melting point, 10-12°C; soluble in hexane, chloroform, diethyl ether, slightly soluble in ethyl acetate, acetone, methanol and ethanol, insoluble water; TLC, single spotted, R_f 0.41 (no color in sunlight, UV active, golden brown in iodine, blue with vanillin-sulphuric acid + heat and deep brown with 5% alc. $KMnO_4$). GC-MS revealed its molecular formula and weight as $\text{C}_{19}\text{H}_{36}\text{O}_2$ and 296g mol^{-1} respectively. **IR** (ν max, cm^{-1}): 2900-2850 (C-H, aliphatic), 1702.95 (CO), 1612.88 (alkene), 1486.55 (C-H in CH_3), 1302-1200 (CO, acetate) and 1014.77 (C-H in CH_2). **UV** (λ max, nm): 275 (CO), 180 (alkene). **$^1\text{H-NMR}$** (δ ppm): 3.59 (strong doublet, H-1'), 2.18-2.21 (weak multiplet, H-2), 1.59-1.61 (weak triplet, H-3), 1.27 (sharp singlet, H-4, H-5, H-6, H-13, H-14, H-15 and H-16), 1.30 (sharp singlet, H-7, H-12 and H-17), 1.91-1.94 (weak multiplet, H-8 and H-11), 5.29 (weak doublet, H-9 and H-10) and 0.95 (weak triplet, H-18). **$^{13}\text{C-NMR}$** (δ ppm): 49.2 (C-1'), 172.8 (C-1), 32.4 (C-2, C-8 and C-11), 24.3 (C-3), 28.2 (C-4), 28.5 (C-5 and C-15), 28.9 (C-6, C-13 and C-14), 29.4 (C-7 and C-12), 128.9 (C-9 and C-10), 30.6 (C-16), 21.8 (C-17) and 13.8 (C-18). **DEPT 135** (δ ppm): revealed one quaternary (C-1), fourteen methylene (C-2 to C-8 and C-11 to C-17), two methyl (C-1' and C-18) and two methine (C-9 and C-10) groups. **GC-MS** (m/z peaks): $296[\text{M}^+, \text{C}_{19}\text{H}_{36}\text{O}_2]^+$, $264[\text{M}-\text{OCH}_3]^+$, $222[\text{M}-\text{OC}_4\text{H}_9]^+$, $180[\text{M}-\text{C}_6\text{H}_{13}\text{O}]^+$, $137[\text{M}-\text{C}_9\text{H}_{19}\text{O}_2]^+$, $123[\text{M}-\text{C}_{10}\text{H}_{21}\text{O}_2]^+$, $101[\text{C}_6\text{H}_{13}\text{O}]^+$, $97[\text{C}_6\text{H}_9\text{O}]^+$, $87[\text{C}_4\text{H}_7\text{O}_2]^+$, $74[\text{C}_3\text{H}_5\text{O}_2]^+$, $69[\text{C}_3\text{HO}_2]^+$, $56[\text{C}_4\text{H}_8]^+$, $55[\text{base peak}, \text{C}_4\text{H}_7]^+$, $43[\text{C}_3\text{H}_6]^+$ and $41[\text{C}_3\text{H}_5]^+$. IR suggests it is an ester, while UV shows the compound possesses sp^2 hybridized carbon atoms. Its Proton NMR suggests the presence of deshielded protons of an allylic group (H-9 and H-10) which occurred at $\delta 5.29$, downfield $\delta 3.59$ of a methyl group attached to an electron withdrawing oxygen atom. Generally, π bonds are effective in influencing the chemical shift of nearby atoms, so that allylic H's are shifted downfield/higher δ values.²⁴ Sharp singlets at $\delta 1.27$ and $\delta 1.30$ indicate several protons in same environment.

Carbon-13 revealed twelve proton-decoupled peaks, of which peaks at δ 32.4, 28.5, 28.9 and 29.4 were of strong intensities. The weak peak at δ 172.8 is attributable to the presence of a carbonyl group. Generally, a carbonyl group exhibits anisotropic effect on adjacent atoms. This causes the carbonyl carbon and the hydrogen atoms bonded to them to resonate at the lowest field position because of combined effects of the induced anisotropic field and a nearby electronegative element.²⁴ DEPT 135 revealed the compound is made up of nineteen carbon atoms. Its GC-MS spectra revealed prominent peaks at m/z 264, 222 and 180 due to the loss of OR groups from the parent, M. Other peaks are as a result of oxygen-containing fragment (137, 123, 101, 97, 84, 74 and 69) and alkyl-containing fragment (56, 55, 43 and 41).¹⁷ Correlation of obtained data with literature values revealed similar data with methyl trans-9-octadecenoate (Figure 3), it has been

reported and isolated from some medicinal plants.^{25, 26}

CONCLUSION

Purification of the crude chloroform extract of the ripe fruits of *N. latifolia* led to the isolation of three fatty acid esters. The esters were characterized based on spectroscopic data and identified as palmitic acid, ethyl ester; iso-palmitic acid, methyl ester and elaidic acid, methyl ester. Further work will be directed towards isolating and characterizing more bio-active principles from the ripe fruits of *N. latifolia*.

ACKNOWLEDGEMENT

The author wishes to express her unreserved gratitude to Mal. Shamsudeen of the Department of Chemistry, King Fahd University of Petroleum and Minerals, Saudi Arabia for helping out with the NMR and DEPT spectra.

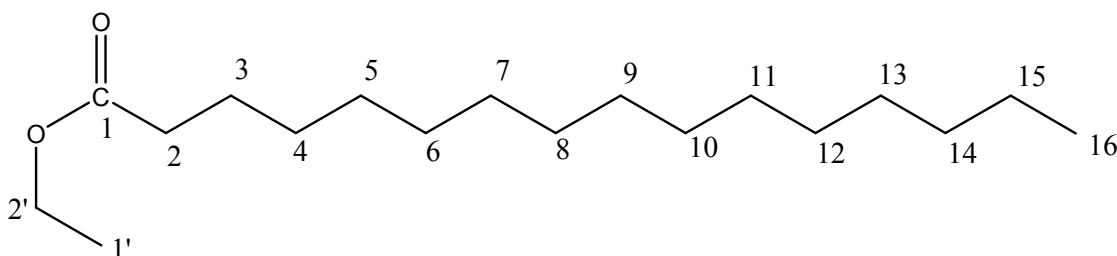


Fig. 1: Ethyl palmitate/Palmitic acid, ethyl ester/Hexadecanoic acid, ethyl ester

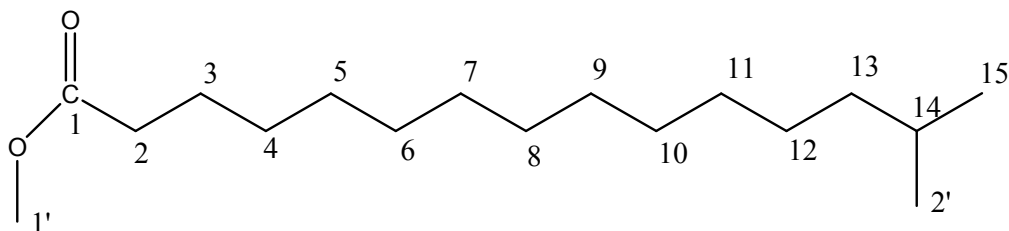


Fig. 2: Pentadecanoic acid, 14-methyl, methyl ester/Methyl, 14-methylpentadecanoate/iso-Palmitic methyl ester

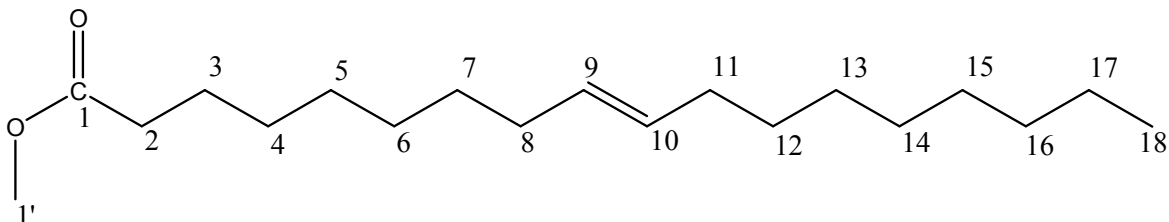


Fig. 3: Methyl trans-9-octadecenoate/9-Octadecenoic acid, methyl ester (E) /Elaidic acid, methyl ester/Methyl elaidate

REFERENCES

- Hamburger MO and Hostettmann K. Bioactivity in plants: The link between phytochemistry and medicine. *Phytochemistry*.1991;30:3864-3874.
- Iwu MW. Handbook of African medicinal plants, CRC Press, Boca Raton, Florida. 1993;435.
- Abbiw DK. Useful plants of Ghana, Intermediate Technology Publications and the Royal Botanic Gardens, Kew, London. 1990;S154-157.
- Asase A, Oteng-Yeboah AA, Odamtten GT and Simmonds MSJ. Ethnobotanical studies of some Ghanaian anti-malarial plants. *J of Ethnopharmacol*. 2005;99:273-279.
- Iwu MW, Duncan AR and Okunji CO. New antimicrobials of plant origin, In: J. Janick (ed.) Perspectives on new crops and new uses, ASHS Press, Alexandria, VA. 1999;457-462.
- Fadipe AL, Haruna AK, Mohammed I and Ibikunle GF. Phytochemical and in-vitro antibacterial evaluation of the extracts, portions and sub-portions of the ripe and unripe fruits of *Nauclea latifolia*. *Journal of Medicinal Plants Research*. 2013;7(11):629-636.
- Fadipe AL, Haruna AK and Mohammed I. Antibacterial activity-guided isolation of di-(2-ethylhexyl) phthalate from the acetone-soluble portion of the ripe fruits of *Nauclea latifolia*. *The Journal of Phytochemistry Photon*. 2014a;115:245-252.
- Fadipe AL, Haruna AK and Mohammed I. Antibacterial activity of 1, 2-benzenedicarboxylic acid, dioctyl ester isolated from the ethyl acetate soluble sub-portion of the unripe fruits of *Nauclea latifolia*. *International Journal of Pure and Applied Bioscience*. 2014b;2(1):223-230.
- Morah FN I. Naucleal and epinaucleal from an antiviral preparation from *Nauclea latifolia*. *Jamaican Jour Sci Tech*.1994;5:22-25.
- Hussein G, Miyashiro H, Nakamura N, Hattori M, Kawahata T, Otake T, Kakiuchi N and Shimotohno K. Inhibitory effects of Sudanese plants on HIV-1 replication and HIV-1 protease. *Phytother Res*. 1999;13(1):31-36.
- Lawal IO, Igboanugo ABI, Osikarbo B, Duyilemi OP, Adesoga AA, Borokini TI and Adeyanju A. Evaluation of plant-based non-timber forest products (ntfps) as potential bioactive drugs in South-Western Nigeria. *J Clin Med Res*. 2010;3:61-66.
- Jiofack T, Fokunang C, Guedje N, Kumeuze V and Fongnzossie E. Ethnobotanical uses of medicinal plants of two ethno ecological regions of Cameroon. *Int J Med Med Sci*. 2010;2:60-79.
- Omale J and Haruna HU. Hypocholesterolemic effects of *Nauclea latifolia*(Smith) fruit studied in albino rats. *American Journal of Tropical Medicine*. 2011;1(1):11-21.
- Atta-ur-Rahman A. *Studies in Natural Products Chemistry*, Elsevier Publishers, Amsterdam, The Netherlands. 2003;26:1036.
- Nkafamiya II, Manji AJ, Modibbo UU and Umaru HA. Biochemical evaluation of *Cassipourea congoensis* (Tunti) and *Nauclea latifolia* (Luzzi) fruits. *African Journal of Biotechnology*. 2006;6(19):2461-2463.
- Fadipe AL. Isolation and characterization of di-(1-hexen-5-yl) phthalate and monoethyl phthalate from the ethyl acetate extract of unripe fruits of *Nauclea latifolia*. *International Journal of Biology, Pharmacy and Allied Sciences*. 2014;3(5):776-784.
- Silverstein RM, Bassler GC and Morrill TC. *Spectrometric identification of organic compounds*, 5th ed., John Wiley and sons, New York. 1991;19:26-27.
- Joshi H, Joshi AB, Sati H, Gururaja MP, Shetty PR, Subrahmanyam EVS and Satyanaryana D. Fatty acids from *Memecylon umbellatum* (Burm.). *Asia J Research Chem*. 2009;2(2): 178-180.
- Sodipo OA, Abdulrahman FI, Alemika TE, Gulani IA and Akinniyi JA. Gas chromatography-mass spectrometry (GC-MS) analysis and antimicrobial investigation of the ethyl acetate extract of *Gorongo-Solanum macrocarpum* L. *Journal of Pharmacy and Bio resources*. 2010;7(2):164-172.
- Nadaf M, Halimi M and Nasrabadi M. Identification of non-polar compounds of *Ziziphora persia* extract growing in Iran by GC-MS. *Middle-East J of Scientific Research*. 2013;13(2):187-190.
- De Carvalho MG, De Oliveira MCC and Werle AA. Chemical constituents from *Luxemburgia nobilis* (EICHL).

- Journal of Brazilian Chemical Society. 2000;11(3):232-236.
22. Hossain MA, Al-Toubi WAS, Weli AA, Al-Riyami QA and Al-Sabahi JN. Identification of chemical compounds in different crude extracts from leaves of Omani neem. Journal of Taibah Univ for Science. 2013;7(4):181-188.
23. Uzama D, Orishadipe AT, Thomas SA, Fagbohun AA, Rabi LD and Kabir MG. GC-MS analysis of Daniella oliveri seed oil. International J of Pharmaceutical Research and Development. 2013;5(6):001-003.
24. Williams DH and Fleming I. Spectroscopic methods in organic chemistry, 4th ed, McGraw-Hill book company (UK) Limited, London. 1987;71.
25. Kanimozhi D and Bai VR. Analysis of bioactive components of ethanolic extract of Coriandrum sativum L. International Journal of Research in Pharmacy and Science. 2012;2(3):97-110.
26. Igwe OU and Okwu DE. GC-MS evaluation of bioactive compounds and antibacterial activity of the oil fraction from the seeds of Brachystegia eurycoma (HARMS). Asian Journal of Plant Science and Research. 2013;3(2):47-54.